

IoT: Lighting the Way

The Role of Lighting in the Adoption of IoT

Tony Adams, LC
National Lighting Manager
Evergreen Consulting Group

March 17, 2017



IoT = Connectivity

- “Everything that can be connected, will be connected.”
 - 20 billion objects to be connected by 2020
- Medical monitoring
 - Point-of-sale product information
 - Customer data mining
 - Traffic monitoring
 - Appliance maintenance
 - Vehicle-to-vehicle communication
 - Campus navigation
 - Security monitoring



Lighting: Conduit to Connectivity

- Provides a connectivity distribution means
- No new carrier infrastructure required
- Power source at each luminaire

Retail

Hospitals

Offices

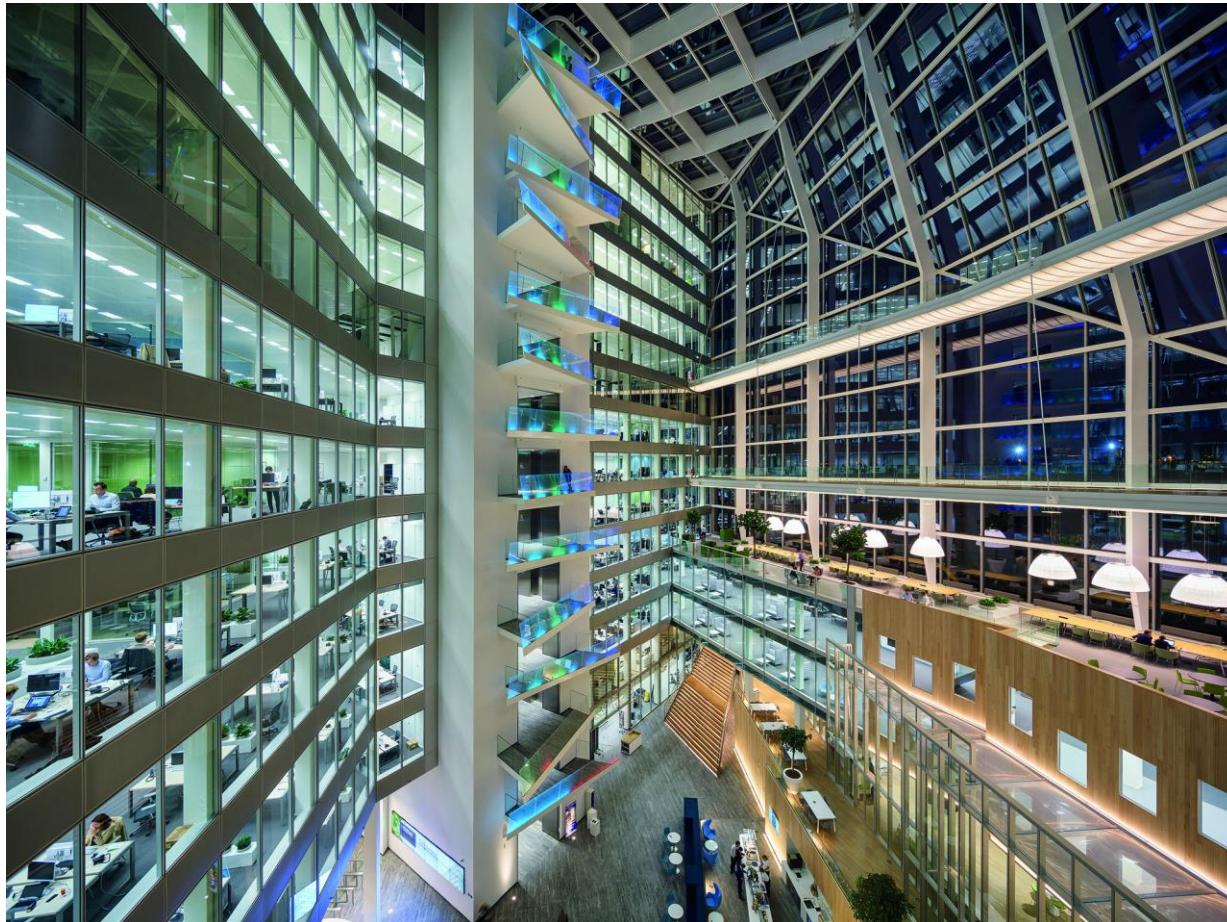
Fulfillment Centers

Campuses

Schools

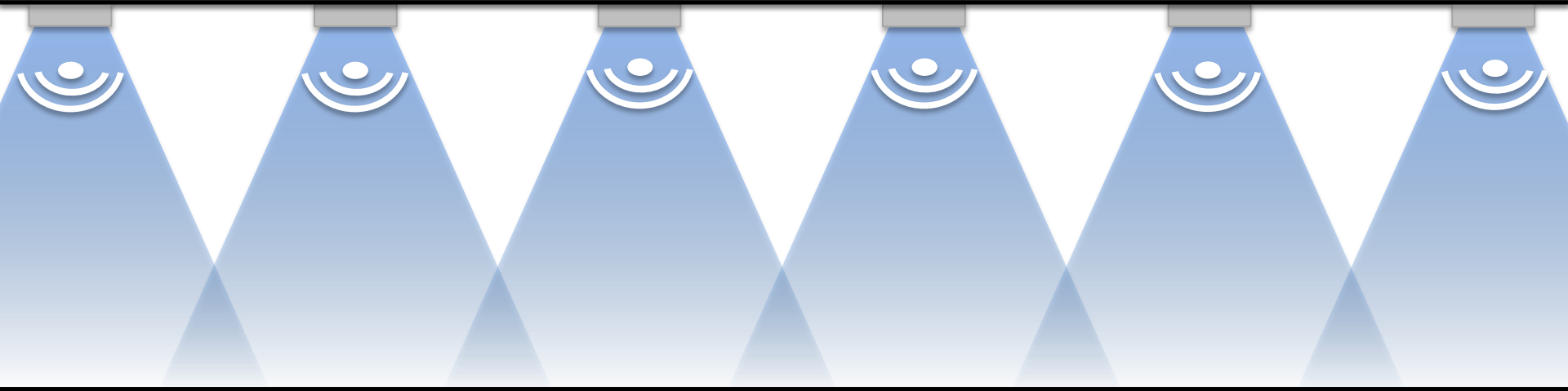


Ubiquitous Interior Lighting

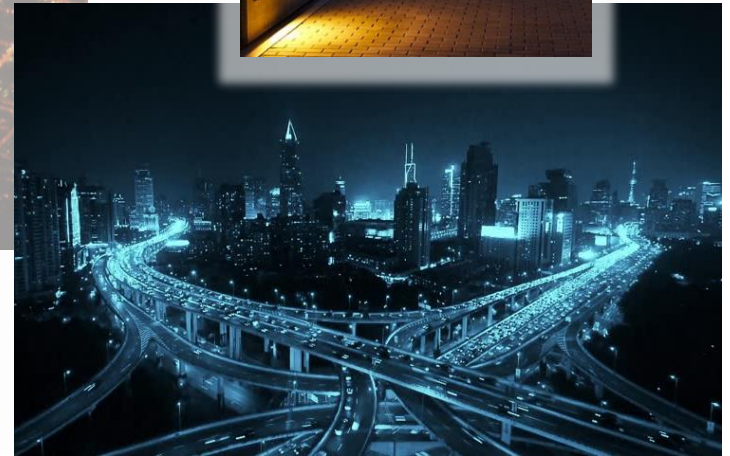


Uniform Connectivity

- Embedded WiFi, Controls



Exterior Lighting: Tying it Together



LED Lighting

- Solid State devices
- Switchable, dimmable without degradation
- Low energy draw
- Low Voltage DC (transformed from AC)



Connected Lighting: NLC & LLC

- Each luminaire is a control node
 - Data extracted to cloud or to server
 - GUI with extractable reports
 - Power independent of layout
 - Re-assignable control
 - Coordination with BMS
 - Security enhancement
 - Maintenance diagnosis
- **24% of future energy savings**
 - **Eventual DSM potential**
 - **Future-proofing**



Luminaire Level Control Simplification

- LED luminaire, dimming driver, occupancy and daylight sensors, field wired installation



- Tedious commissioning

- LED luminaire with integrated occupancy / daylight sensing and dimming driver – plug & play



- Simple commissioning



Exterior Mesh Network

- NEMA 7-pin connector
- Twist-lock wireless GPS/controller/sensor/repeater



- LED luminaire 'futureproofed' with NEMA 7-pin connector installed, ready for technology adaptation



POE: Power Over Ethernet

- Power & data supplied over same Cat 5 cable
- Low Voltage DC power, up to 60W per cable
- Modularity without electricians



LiFi: White Light Communication

- Bi-directional communication
 - Unlimited bandwidth
 - High speed, 100x WiFi
 - Digital, high freq light pulse signal
 - No EMI
 - Line-of-sight, won't penetrate walls
 - Hacking resistant
- **Visible light spectrum communication**



Lighting Application Challenges

- Following 111 years of recommended practices
- Lighting Design vs IT needs

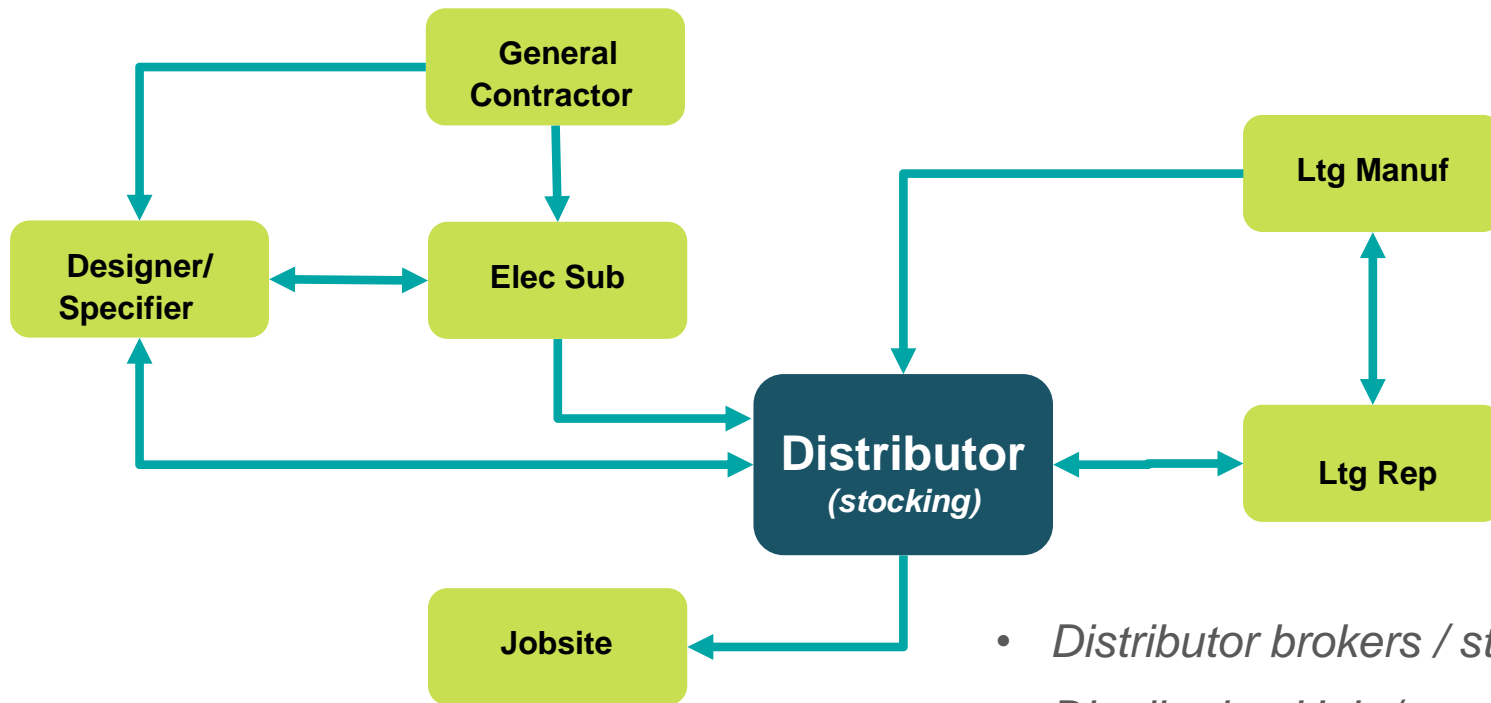


Lighting Market Challenges

- Cost of integrating components
- Futureproofing
- Stocking / shipping



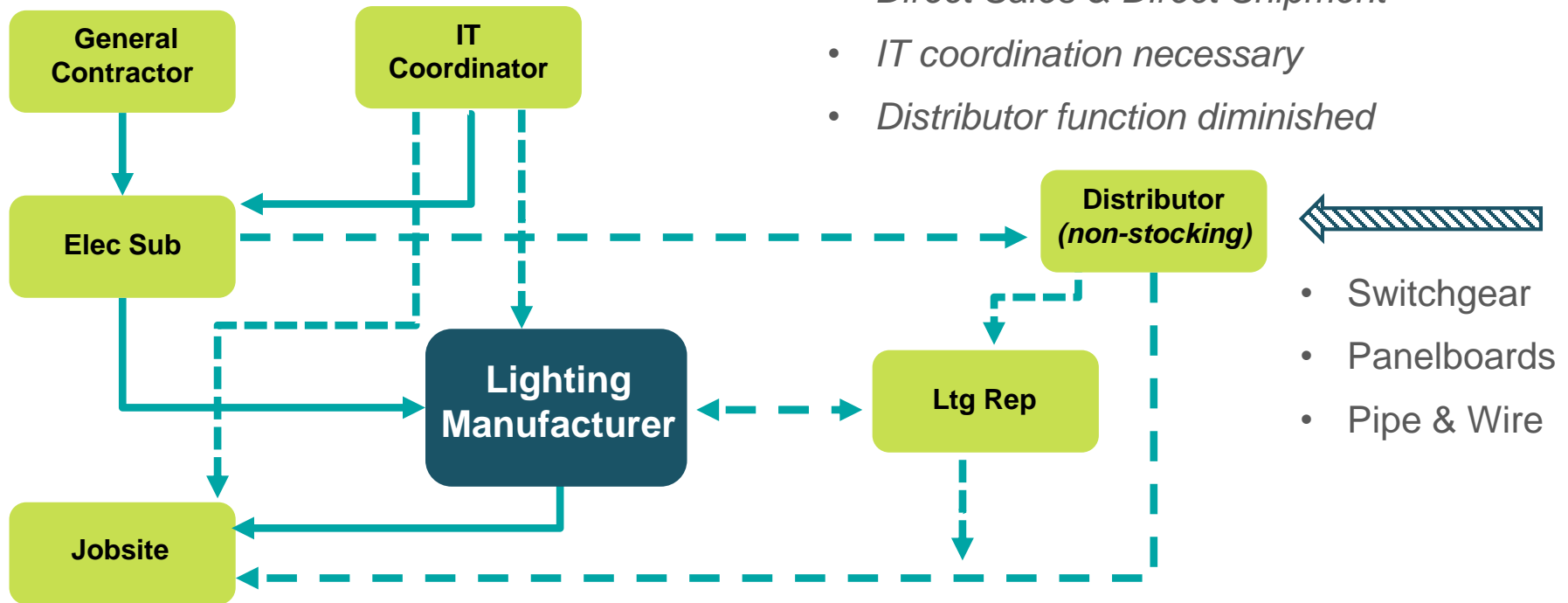
Traditional Lighting Channel



- *Distributor brokers / stocks material*
- *Distribution Hub / supplies Jobsite*

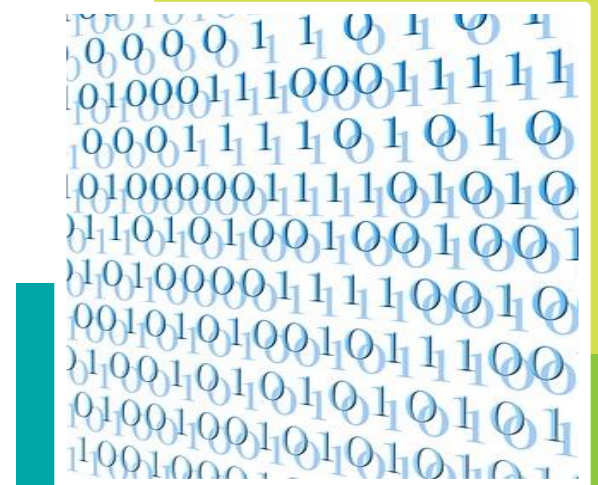


New Lighting Channel



Lighting Future – 2017 Onward

- Lighting = information
- Connectivity: IoT, POE, LiFi
- Data mining & marketing
- Impending code aggressiveness
- Demand response
- Controls, tunable white
- New forms, new markets



Thank You!

■ Questions?

evergreen-efficiency.com

